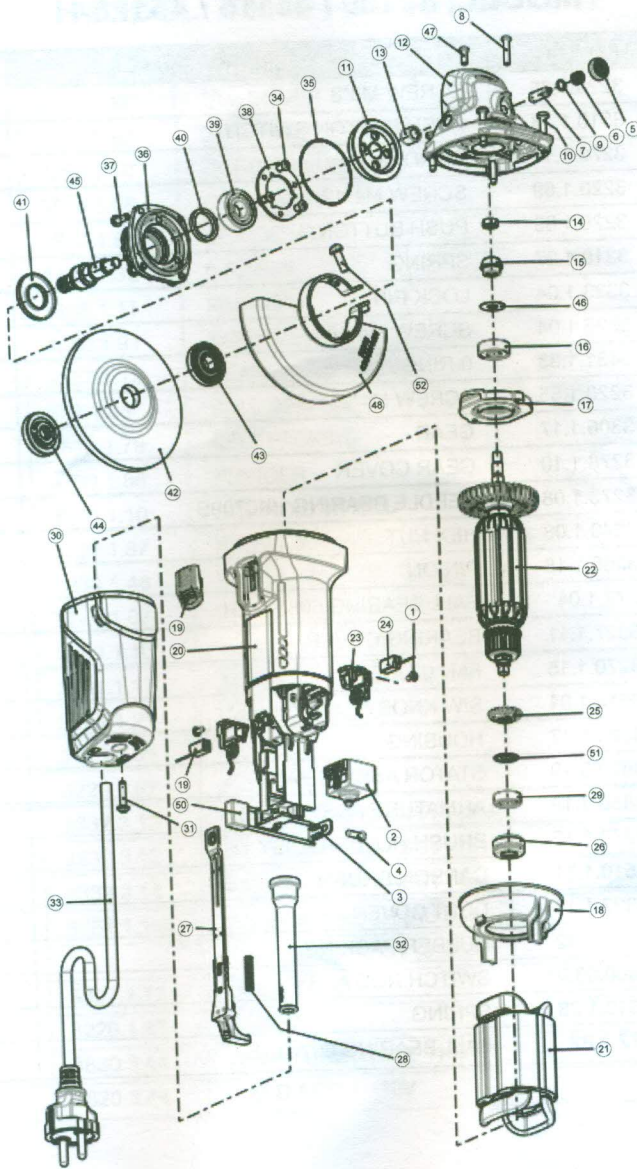


Product decomposition diagram



Parts List for ANGLE GRINDER

MODEL: 45100 / 45115 / 45125-H

DRG. Sr. No.	PART NO.	DESCRIPTION	QTY/TOOL
1	3220.1.86	SCREW M3*8	2
2	3510.1.78	PUSH BUTTON SWITCH	1
3	3279.1.11	CORD SLIP	1
4	3220.1.89	SCREW M4*12	1
5	3220.1.89	PUSH BUTTON	1
6	3310.1.27	SPRING	1
7	3323.1.04	LOCK PIN	1
8	3323.1.04	SCREW M4*18	1
9	3431.1.33	O-RING	1
10	3220.1.85	SCREW M4*25	1
11	3306.1.17	GEAR	1
12	3278.1.10	GEAR COVER	1
13	3273.1.08	NEEDLE BEARING HK0709B	1
14	3249.1.08	HEX NUT	1
15	3306.1.18	PINION	1
16	272.1.04	BALL BEARING 608 R LLH	1
17	3327.1.11	BEARING COVER	1
18	3270.1.15	FAN GIUDE	1
19	3510.1.81	S/W KNOB	1
20	3260.1.17	HOUSING	1
21	3820.3.19	STATOR ASSY (235V)	1
22	3830.3.19	ARMATURE ASSY (235V)	1
23	3270.1.15	BRUSH HOLDER ASSY	2
24	3510.1.81	CARBON BRUSH	1
25	3327.1.14	DUST COVER	1
26	3431.1.32	RUBBER PACKING	1
27	3500.03.07	SWITCH ROD ASSY	1
28	3310.1.28	SPRING	1
29	272.1.82	BALL BEARING 607 LLU	1

Parts List for ANGLE GRINDER

MODEL: 45100 / 45115 / 45125-H

DRG. Sr. No.	PART NO.	DESCRIPTION	QTY/TOOL
30	3278.1.11	TAIL COVER	1
31	3220.1.90	SCREW M4*16	1
32	3360.1.10	CORD ARMOR	1
33	3500.3.08	CORD ASSY	4
34	3220.1.88	SCREW M4*10	1
35	3431.1.32	O-RING ©	1
36	3265.1.11	PACKING GLAND	1
37	3220.1.91	SCREW M4*12	1
38	3327.1.12	BEARING COVER (B)	1
39	272.1.58	BALL BEARING 6001 LLB	1
40	3510.1.79	FELT PACKING	1
41	3230.1.86	FRINGER	1
42	3340.1.10	RESINOID WHEEL	1
43	3230.1.87	WHEEL WASHER (45115 / 45125-H)	1
	3230.1.46	WHEEL WASHER (45100)	1
44	3249.1.07	WHEEL NUT (45115/45125-H)	1
	3249.1.10	WHEEL NUT (45100)	1
45	3291.1.17	SPINDLE (45115/45125-H)	1
	3291.1.21	SPINDLE (45100)	1
46	3313.1.05	PLATE	1
47	3220.1.92	SCREW M4*10	1
48	3332.3.13	WHEEL GUARD ASSY (45115)	1
	3332.3.12	WHEEL GUARD ASSY (45100)	1
	3332.3.14	WHEEL GUARD ASSY (45125-H)	1
49	3251.1.16A	CARBON BRUSH (AUTO)	1
50		CAPACITOR ASSY (0.22UF)	1
51	3327.1.13	DUST SEAL	1
52	3220.1.93	SCREW	1
	3830.3.44	ARMATURE ASSLY 110V	1
	3820.3.44	FIELD ASSLY 110V	1