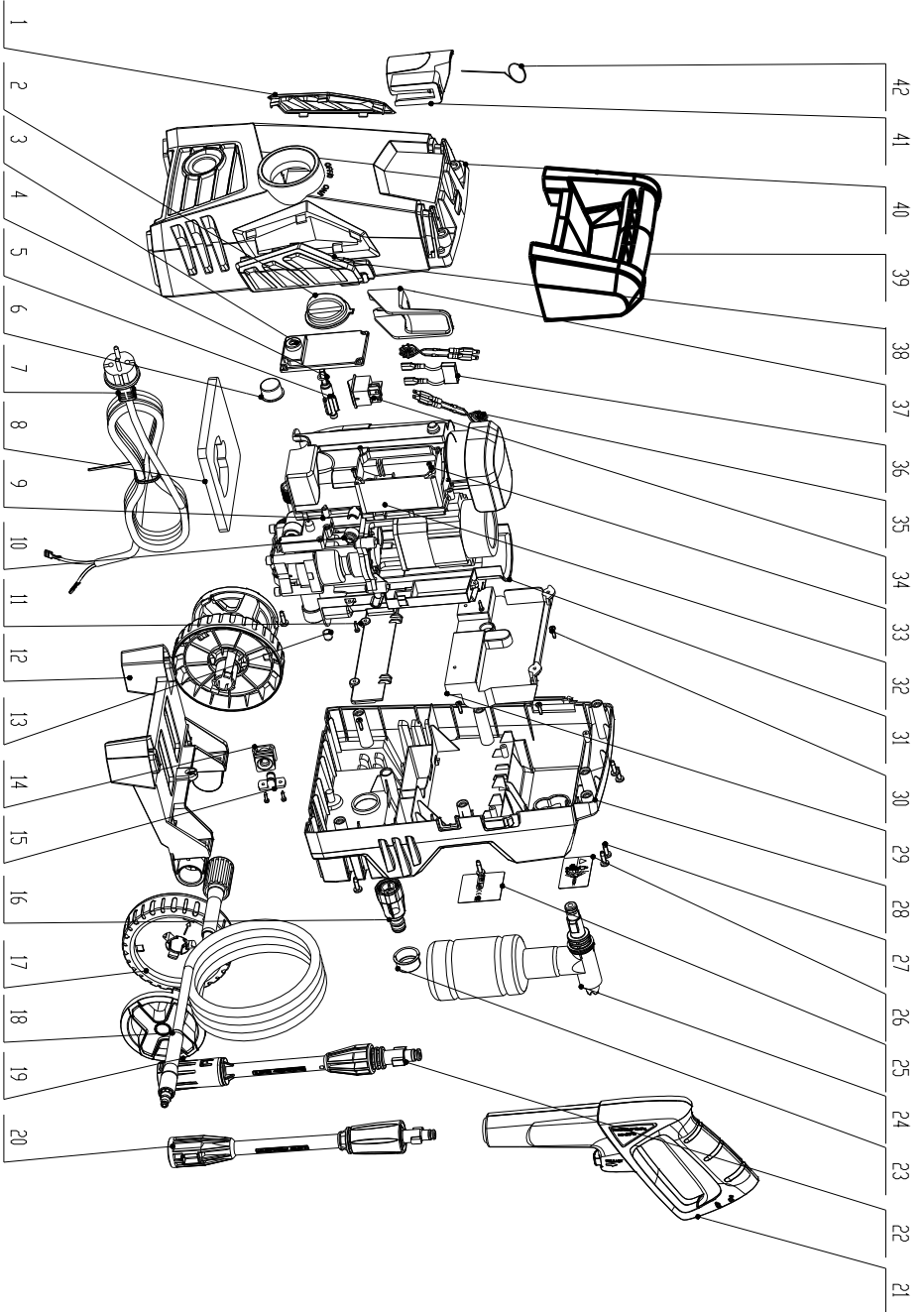


High Pressure Washer Drawing

Model : RHP100

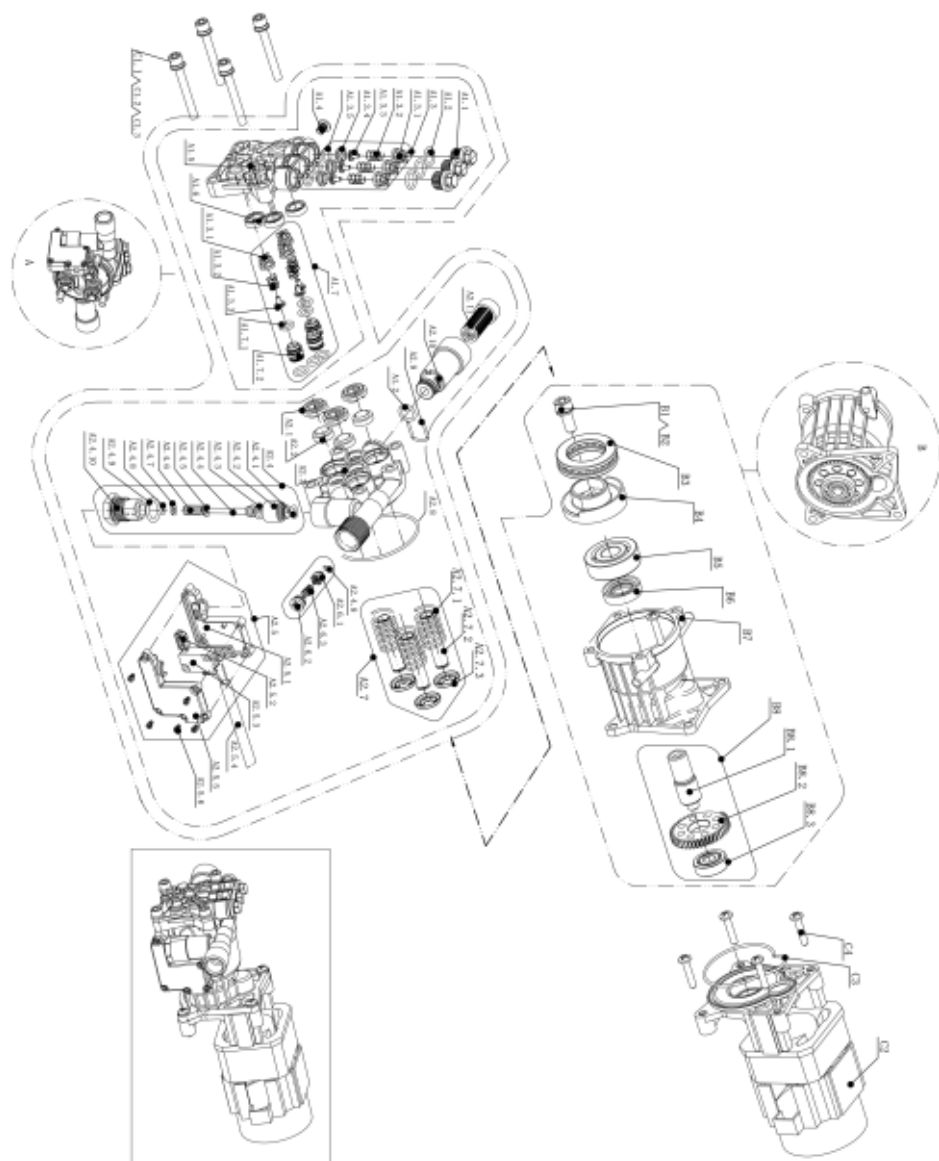


RALLIWOLF HIGH PRESSURE WASHER - RHP100
PARTS LIST

NO.	our part no	description	Quantity
1	3603.1.01	LEFT DECORATE BOARD	1
2	3603.1.02	SWITCH KNOB	1
3	3603.1.03	SWITCH COVER	1
4	3603.1.04	O-RING 8.5X1.8/70HS/ROHS	1
5	3603.1.05	SWITCH POLE	1
6	3603.1.06	WATEROUT TUBE COVER	1
7	3603.1.07	CABLE	1
8	3603.1.08	FRONT FILTER SCREEN	1
9	3603.1.09	FAN BOX	1
10	3603.1.10	CABLE SEAL	1
11	3603.1.11	DOWN WATER-STOP SHEET	1
12	3603.1.12	PEDESTAL	1
13	3603.1.13	DAMPING RNG	2
14	3603.1.14	CABLE SHEATH	1
15	3603.1.15	CABLE PLATE	1
16	3603.1.16	WATER INLET NUT	1
17	3603.1.17	WHEELS	2
18	3603.1.18	PRESSURE HOSE	1
19	3603.1.19	WHEEL COVER	2
20	3603.1.20	CONNECTING LANCE	1
21	3603.1.21	GUN	1
22	3603.1.22	LANCE	1
23	3603.1.23	WATER INLET TUBE COVER	1
24	3603.1.24	SOAP BOTTLE	1
25	3603.1.25	RATING LABEL	1
26	3603.1.26	WARNING LABEL	1
27	3603.1.27	SCREW ST4.8X16	9
28	3603.1.28	REAR HOUSING	1
29	3603.1.29	UPPER WATER-STOP SHEET	1
30	3603.1.30	SCREW ST3.5X13F	6
31	3603.1.31	FAN COVER	1
32	3970.3.01	MOTOR PUMP	1
33	3603.1.32	SCREW ST3X12	10
34	3603.1.33	SWITCH	1
35	3603.1.34	INDUCTANCE	2
36	3603.1.35	CAPACITA	1
37	3603.1.36	CABLE HOOK	1
38	3603.1.37	RIGHT DECORATE BOARD	1
39	3603.1.38	SHORT HANDLE	1
40	3603.1.39	FROM HOUSING	1
41	3603.1.40	GUN HOLDER	1
42	3603.1.41	CLEANING PIN	1

Motor & Pump Drawing

Model : RHP100



RALLWOLF HIGH PRESSURE WASHER RHP100- PARTS LIST ONLY FOR MOTOR PUMP

Items	OUR PART NO	DESCRIPTION	Quantity	
A	3603.1.42	Pump assembly	1	
A1	3603.1.43	pump head assembly	1	
A1.1	3603.1.44	valve nu.	3	
A1.2	3603.1.45	o-ring	3	
A1.3	3603.1.46	outlet valve assemble	3	
A1.3.1	3603.1.47	valve bracket	3	
A1.3.2	3603.1.48	valve spring	3	
A1.3.3	3603.1.49	valve cone	3	ONLY ASSEMBLY YA1.1 AVAILABLE FOR SALE
A1.3.4	3603.1.50	valve base	3	
A1.3.5	3603.1.51	o-ring	3	
A1.4	3603.1.52	X-screw	1	
A1.5	3603.1.53	pump head	1	
A1.6	3603.1.54	Y-seal	3	
A1.7	3603.1.55	inlet valve kit	3	
A1.7.1	3603.1.56	o-ring	6	
A1.7.2	3603.1.57	inlet valve base	3	
A1.3.1	3603.1.58	valve bracket	3	ONLY ASSEMBLY YA1.7 AVAILABLE FOR SALE
A1.3.2	3603.1.59	valve spring	3	
A1.3.3	3603.1.60	valve cone	3	
A2	3603.1.61	Cylinder block assemble	1	
A2.1	3603.1.62	sea bracket	3	
A2.2	3603.1.63	piston oil seal	3	
A2.3	3603.1.64	Cylinder block	1	
A2.4	3603.1.65	bypass valve kit	1	
A2.4.1	3603.1.66	o-ring	1	
A2.4.2	3603.1.67	bypass cylinder	1	
A2.4.3	3603.1.68	o-ring	1	
A2.4.4	3603.1.69	bypass cone	1	
A2.4.5	3603.1.70	stop ring	1	ONLY ASSEMBLY YA2.4 AVAILABLE FOR SALE
A2.4.6	3603.1.71	bypass spring	1	
A2.4.7	3603.1.72	washer	1	
A2.4.8	3603.1.73	o-ring	1	
A2.4.9	3603.1.74	o-ring	1	
A2.4.10	3603.1.75	bypass screw	1	
A2.5	3603.1.76	micro-switch kit	1	
A2.5.1	3603.1.77	lower box cover	1	
A2.5.2	3603.1.78	pole	1	
A2.5.3	3603.1.79	micro-switch	1	ONLY ASSEMBLY A2.5 AVAILABLE FOR SALE
A2.5.4	3603.1.80	micro-switch cable	1	
A2.5.5	3603.1.81	upper box cover	1	
A2.5.6	3603.1.82	ST-screw	5	
A2.6	3603.1.83	chief valve kit	1	
A2.6.8	3603.1.84	o-ring	1	
A2.6.1	3603.1.85	chief valve cone	1	ONLY ASSEMBLY YA2.6 AVAILABLE FOR SALE
A2.6.2	3603.1.86	cone spring	1	
A2.6.3	3603.1.87	cone spring base	1	
A2.7	3603.1.88	piston KIT	1	
A2.7.1	3603.1.89	piston	3	
A2.7.2	3603.1.90	spring chuck	3	ONLY ASSEMBLY YA2.7 AVAILABLE FOR SALE
A2.7.3	3603.1.91	piston spring	3	
A2.8	3603.1.92	o-ring	1	
A2.9	3603.1.93	u-ph	1	
A2.10	3603.1.94	inlet pipe	1	
A1.2	3603.1.95	o-ring	1	
A2.11	3603.1.96	filter	1	
B	3603.1.97	GEAR BOX ASSEMBLY	1	
B1	3603.1.98	inner hexagon screw	1	
B2	3603.1.99	plain washer	1	
B3	3604.1.01	bearing 51106	1	
B4	3604.1.02	wobble disc	1	
B5	3604.1.03	bearing 6302	1	