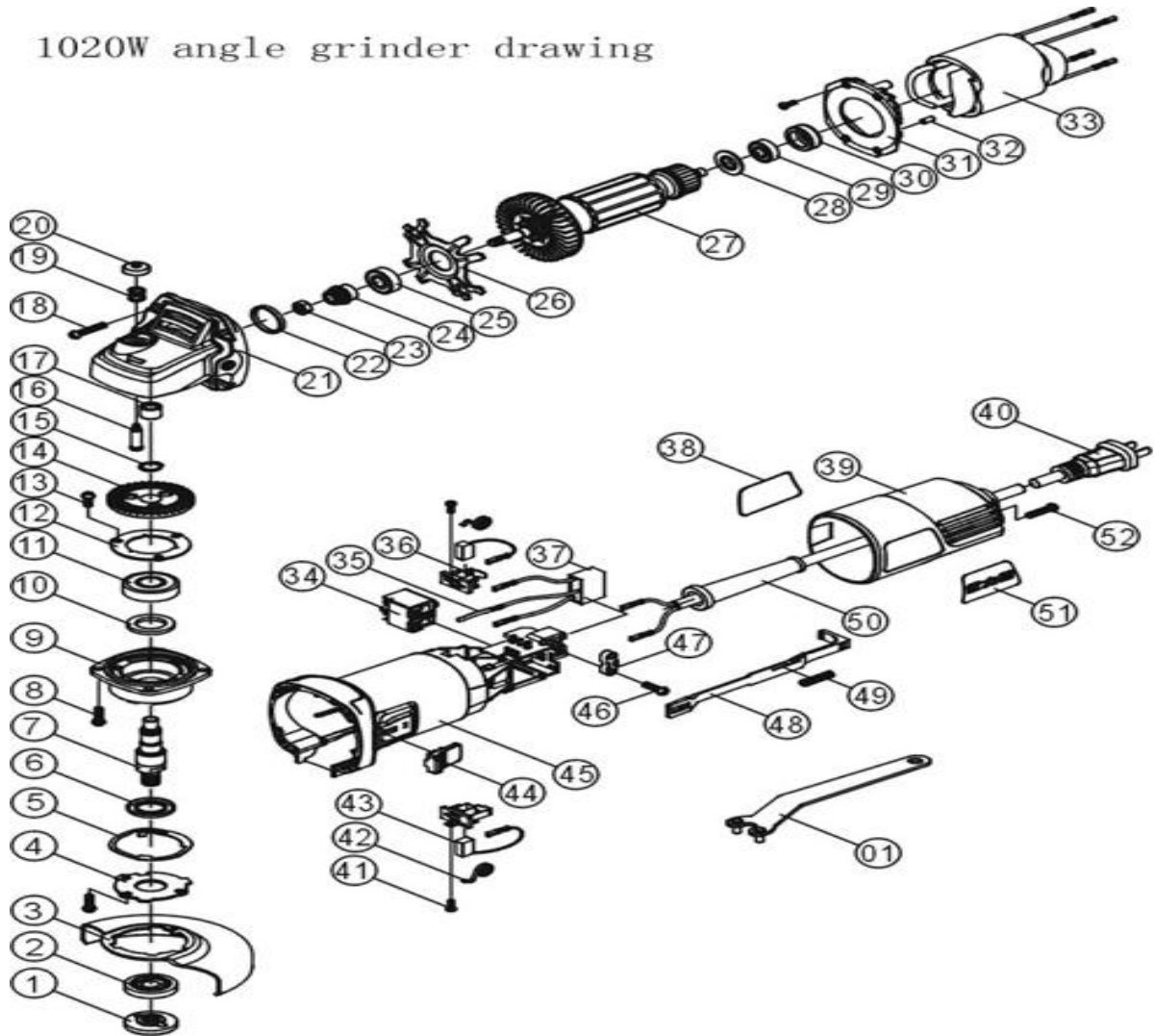


1020W angle grinder drawing



RW Part No. AG100

3230.1.50	1	wheel nut	1
3233.1.08	2	wheel flange	1
3332.1.06	3	wheel guard	1
3230.1.51	4	lock washer of wheel guard	1
3230.1.52	5	washer	1
3270.1.09	6	dustproof cover	1
3291.1.10	7	spindle	1

3220.1.14	8	screw	4
3270.1.10	9	cover plate	1
3230.1.53	10	felt washer	1
272.1.23	11	bearing 6201	1
3348.1.09	12	bearing retainer	1
3220.1.15	13	screw	3
3306.1.09	14	gear wheel	1
3230.1.54	15	washer	1
3323.1.02	16	lockpin	1
3273.1.07	17	needle bearing 81210	1
3224.1.16	18	screw	4
3310.1.10	19	clock spring	1
3500.1.53	20	lock cap	1
3265.1.08	21	gear box	1
3230.1.55	22	washer	1
3604.1.08	23	nut M6	1
3306.1.10	24	pinion	1
272.1.04	25	bearing 608	1
3348.1.10	26	bearing retainer	1
3830.3.13	27	armature	1
3230.1.56	28	washer	1
272.1.82	29	bearing 607	1
3500.1.54	30	bearing sleeve	1
3344.1.05	31	baffle plate	1
3432.1.02	32	screw	2
3820.3.13	33	field	1
3330.1.11	34	switch	1

3500.1.55	35	lock button	1
3252.1.09	36	brush holder set	2
	37	capacitator	
3350.1.13	38	name plate	1
3270.1.11	39	rear cover	1
290.24	40	cable	1
3224.1.17	41	screw	2
3310.1.11	42	spring	1
3251.1.08	43	carbon brush	2
3500.1.56	44	slide button	1
3260.1.10	45	motor frame	1
3224.1.18	46	screw	2
3279.1.02	47	cable cleat	1
3500.1.57	48	sliding switch lever	1
3310.1.12	49	spring	1
3360.1.04	50	cable sleeve	1
3405.1.10	51	name plate (logo)	1
3224.1.19	52	screw	1
3399.1.09	53	spanner	1
3340.1.02	54	abrasive wheel	1