

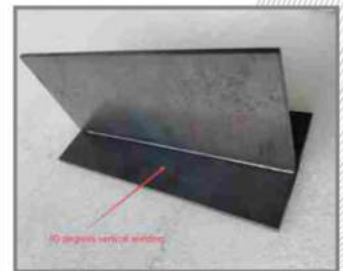
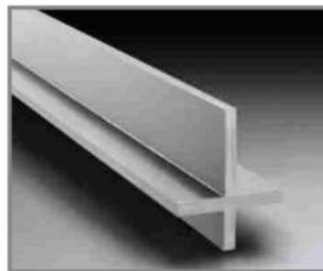
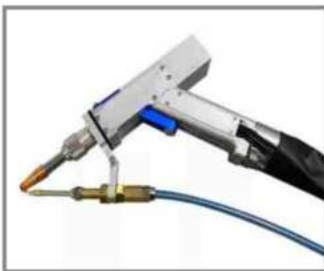
Laser Welding Machine

RaWi Wolf
Welding & Cutting Equipment



Laser Welding Machine

Laser Power	: 1 Kw/1.5 Kw/2 Kw /3Kw
Beam Width	: 0.2 to 5mm
	(Depending on Welding Head)
Laser Wavelength	: 1070 mm
Optical Fiber	: 100um, 5m
Cooling Medium	: 1000 Hz
Continuous Working Time	: 24 Hours
Power Supply Demand	: 200 10%, 50Hz
Head Type	: Wobble with Galvo Technology



The Laser Welding machine uses a high energy laser pulse to locally heat the material in a small area. The energy of the laser radiates and spreads to the inside of the material through heat conduction, and the materials melt to form a specific molten pool. It is a new type of welding.

Features :

- Portable
- Easy to Weld with clean Welds
- Fast and Accurate
- Low cost of ownership
- Homogenous fusion of material