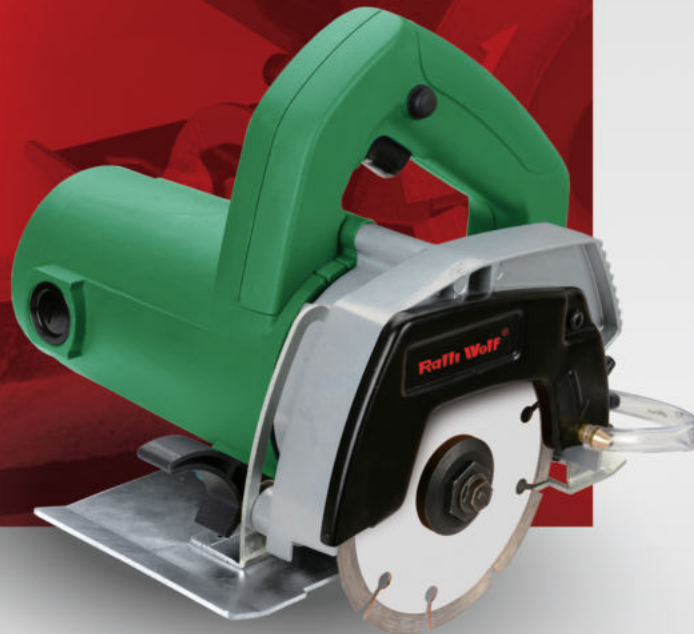


# 110mm MARBLE CUTTER

MODEL: **RW110**

## Features

- Marble & granite cutting
- Double insulated



235V



## Technical Specifications:

Model	: RW110
Insulation	: Double Insulated
Max. Blade Diameter	: 110mm
Max. Cutting Capacity	: 34mm
Rated Voltage	: 235V AC

Watts input (full load)	: 1050 Watts
No Load Speed	: 13000 r.p.m.
Full Load Current	: 4.5A
Approx Weight	: 3 kg.

## Constructional Features:

- 100% copper powerful motor
- Two-way alloy guide rail, wear resistant and durable
- Core drill and twist drill, Two function
- Super powerful Magnetic force

## Ralli Wolf Industries Ltd.

An ISO 9001 : 2015 certified Organisation

### Regd. Office :

Room No. 510, 5th Floor, Diamond Heritage,  
16, Strand Road, Kolkata - 700001 (India)  
E : info@ralliwolf.com, P : +91 81000 80353  
CIN : U51109WB1996PLC077080

### Sales Network :

Ahmedabad, Bangalore, Baroda, Bhopal, Chennai, Coimbatore, Cuttack, Delhi, Gurgaon, Guwahati, Jaipur, Jamshedpur, Kolkata, Ludhiana, Mumbai, Nagpur, Pune, Secunderabad, Siliguri, Thiruvananthapuram, Trichy, Vishakhapatnam

Follow us :



www.ralliwolf.com  +91 90734 93011